

## **Request for Proposals: California Spotted Owl Surveys**

Issued by: Plumas Audubon Society

Location: Plumas National Forest, California

### **Project Summary**

Plumas Audubon Society is seeking qualified contractors to conduct protocol-level presence/absence surveys for the California Spotted Owl (*Strix occidentalis*) within the Plumas National Forest. The purpose of this survey is to ensure compliance with habitat conservation plans and federal regulations.

### **Scope of Work**

Contractors are invited to submit quotes for the completion of two survey visits to thirty-eight (38) designated, established call stations and five survey visits to six (6) designated, established call stations in accordance with the most current USFS-approved survey protocol, *Protocol for Surveying Spotted Owls in Proposed Management Activity Areas*.

### **Timing**

Surveys must be conducted during the active breeding season, between April 15th and August 15th.

### **Data Collection & Reporting**

Record and report all detections of all owls observed.

Submit biweekly survey plans and progress updates.

Submit a final report summarizing findings by August 31st.

### **Required Experience**

- Demonstrated experience with spotted owl call-back surveys and identification.
- Ability to work in remote, mountainous terrain.

## **Proposal Format**

Include:

- A brief description of how the survey will be conducted, including protocols and equipment.
- A chart or detailed timeline for survey visits.
- Resume(s) of surveyor(s).
- At least three (3) professional references for similar projects.
- A detailed budget breakdown, including hourly rates, total estimated hours, and expenses.

## **Submission Details**

Proposals must be submitted via email to Lauren James by June 1st, 2026.

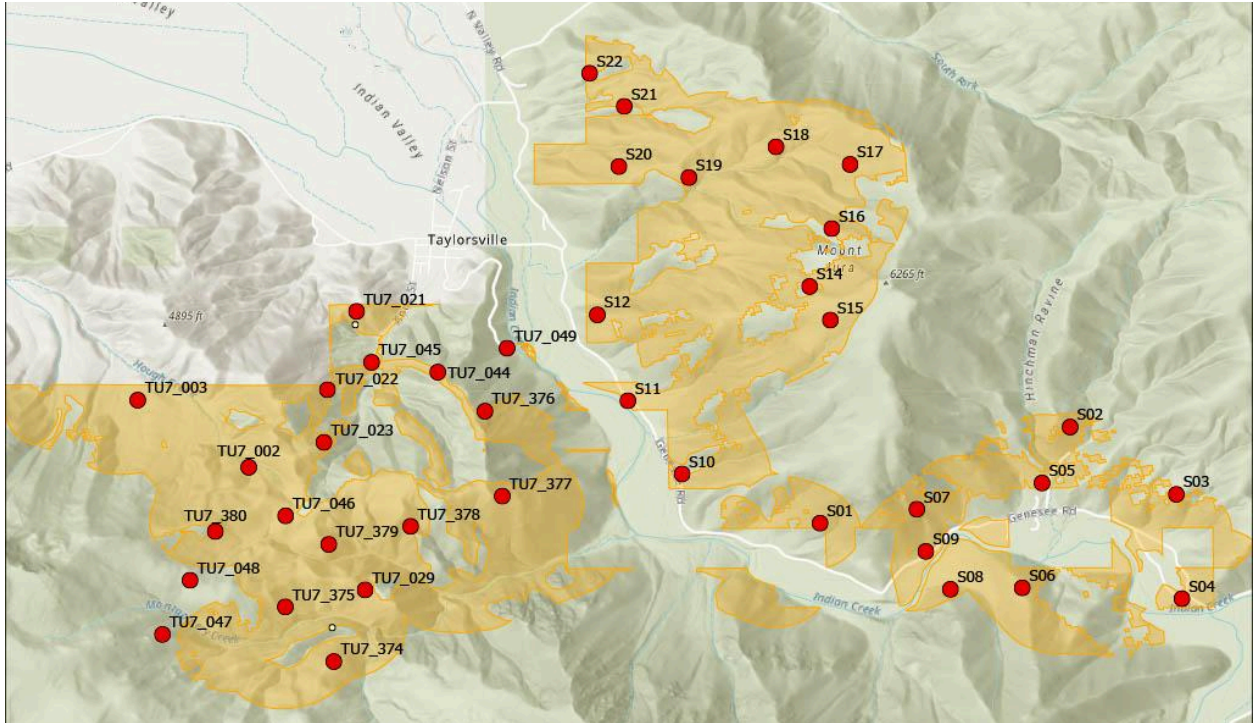
## **Contact for Questions / Submissions**

Lauren James

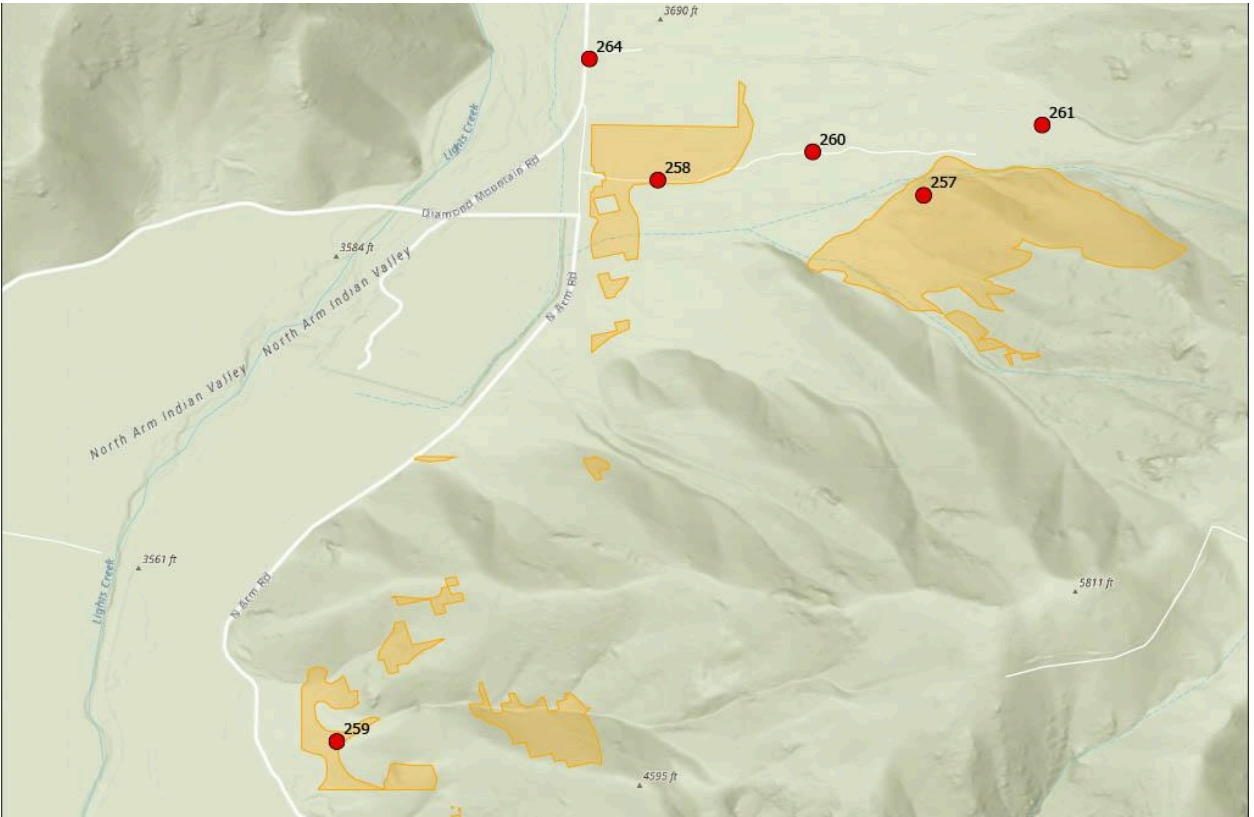
[lauren@plumasaudubon.org](mailto:lauren@plumasaudubon.org)

(530) 616-8670

*See next page for a map of the survey areas.*



The above area requires two (2) surveys in 2026. Call stations S08 & S09 shown on the above map do not need surveying.



The above area requires five (5) surveys in 2026.